

# SHARP®

## ADVANCED SERIES MONOCHROME DOCUMENT SYSTEMS



MX-M5070 MX-M6070



"2019 Copier MFP Line of the Year"

The Sharp Advanced Series monochrome document systems deliver leading-edge integration and powerful productivity.

## THE NEW BENCHMARK OF INNOVATION

advanced

The Sharp MX-M5070 and MX-M6070 Advanced Series monochrome workgroup document systems offer crisp, high quality output with exceptional ease of use. These new models are designed to provide customers with a seamless, intuitive experience, and the confidence in knowing their jobs will come out right the first time, every time. The new monochrome Advanced Series focuses on user operability and draws inspiration from the latest networking and imaging technologies available today, all to create a document system that delivers the productivity you need, with the reliable performance you want.

### Key Features

- **Ease of Use** – Sharp’s customizable touchscreen display offers a user-friendly graphical interface with a clean design, simplified Easy Modes and integrated operation guides.
- **Integration** – Equipped with the latest version of Sharp OSA® technology for easy integration with network applications and cloud services, these models can unlock advanced capabilities to help you better manage your workflow.
- **Productivity** – An integrated walk-up motion sensor and an easy-to-use graphical interface combine with a fast warm up time to create a workflow experience with virtually no waiting time.

The MX-M5070 and MX-M6070 monochrome Advanced Series offer customers powerful multitasking features enabling them to quickly execute the ever-changing workflow tasks of today’s busy office environments. And with Sharp’s multi-layered Security Suite, these new models can help protect your data and personal information from the first day of operation to the time of trade-in.



*"Most Reliable Monochrome Copier MFP Brand 2018–2021"*



*"Outstanding 50 ppm Copier MFP"  
Awarded to MX-M5070*



*"Outstanding 60 ppm Copier MFP"  
Awarded to MX-M6070*

# DESIGNED TO DELIVER PERFORMANCE AND PRODUCTIVITY



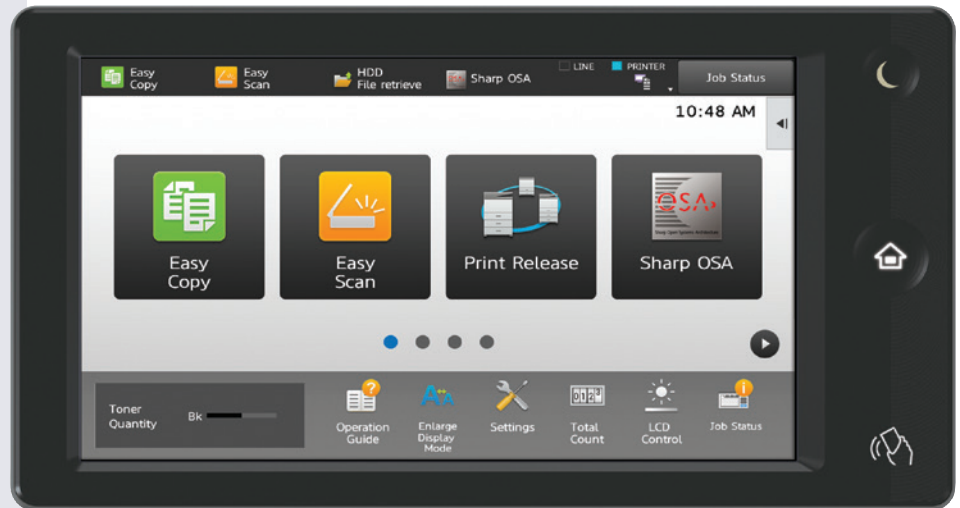
An advanced design plus multifunctional capability allow you to meet tomorrow's document needs today.

- Automatic **walk-up motion sensor** wakes the machine, and it's ready within seconds.
- Offers up to **six paper sources** with available 550 + 2,100-sheet split tandem paper drawers and 3,000-sheet large capacity cassette.
- Large 10.1" (diagonally measured) **customizable touchscreen display** with a clean design enables easy access to features and functions when setting up jobs.

## EASY-TO-USE DESIGN

## ENHANCED INTEGRATION AND WIRELESS CAPABILITY

## VERSATILE PRODUCTIVITY



- NFC tag embedded in the bottom right corner of the control panel allows for easy connection via **Sharpdesk® Mobile** for printing and scanning on the go (see image above).
- Built-in **Optical Character Recognition (OCR)** function can convert scanned documents to text-searchable PDF format, Microsoft® Office file formats, and others.
- Easily **access popular cloud applications**, including Microsoft OneDrive® for Business, SharePoint® Online and Google Drive™ with Sharp's Cloud Connect features.
- Direct print **Microsoft Word, PowerPoint® and Excel®** files from thumb drives, cloud applications, network folders and more. This function is enabled via **DirectOffice™** technology.
- **Standard security platform** includes 256-bit encryption, up to 10-times data overwrite and an End-of-Lease feature that erases all data and personal information at trade-in.
- Standard **150-sheet duplexing document feeder** scans both sides of a document in a single pass at speeds up to **200 images per minute (ipm)**, exerting less wear on the feeder and your original documents.
- Flexible paper handling system supports media up to **110 lb. cover (300 gsm)** and up to **12" x 18"** through the paper trays, allowing you to print on a wide variety of media.



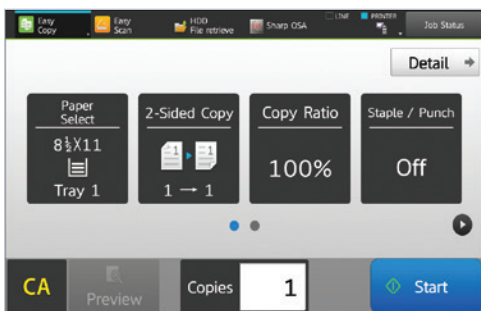
"Pacesetter Award in  
Ease of Use 2018-2019"



*Built-in retractable keyboard simplifies email address and subject line entries as well as repetitive scanning tasks and user authentication.*



## ADVANCED FUNCTIONALITY – INTUITIVE DESIGN



Easy Copy Screen offers the most commonly used settings.



Standard Copy Screen offers more advanced features.



Built-in wireless network interface for convenient scanning and printing from mobile devices.

From paper handling to networking, the MX-M5070 and MX-M6070 monochrome Advanced Series will exceed your expectations.

### *Simple and Intuitive Operation*

From the most basic of copy functions, to the most complex scan jobs, the monochrome Advanced Series will perform them with ease and efficiency. Walk up to the control panel, and the machine senses you approaching and **automatically wakes up**. Within seconds from the time you place your originals in the feeder and select your settings, it's ready to print. Use one of the **Easy Modes** for fast, simple operation, with basic functions displayed in **large, clearly-labeled tiles** and keys. And for more advanced features, just touch the "Details" button—it's that easy.

### *A "Well-connected" Device*

Connecting a multifunction printer (MFP) to your wireless network and accessing it from mobile devices has never been so easy with the monochrome Advanced Series' standard wireless networking features. Print from or scan to popular cloud services such as **Microsoft OneDrive® for Business, SharePoint® Online, and Google Drive™** with Sharp's **Cloud Connect** feature. **Single Sign-on (SSO)** support for accessing these services makes scan-to-folder and scan-to-email operations simpler than ever. Even printing from your desktop is made easier with Sharp's **Serverless Print Release** function. **Easily send a job to one device, and print it on another** when and where it's most convenient for you.

### *The Productivity You Need, the Performance You Want*

When it's time to get the job done, the Advanced Series monochrome document systems are outstanding performers. Quickly scan documents at speeds up to **200 images per minute**. Built-in optical character recognition (OCR) can convert your scanned documents into **text-searchable PDFs** or **Microsoft Office** file formats, simplifying your workflow. Use the **manual stapling feature** on select finishers to restaple your originals. **Multiple finishing options** give you the output you require, be it stacked, stapled or saddle-stitched. There's even an available built-in **stapleless staple** feature, which can bind up to five sheets of paper by adding a crimp to the corner of the set, saving regular staples for larger sets.



MX-M6070 shown with compact inner finisher.



MX-M6070 shown with 3K saddle stitch finisher and large capacity cassette.

# HIGH IMPACT VERSATILITY AND SCALABILITY

The MX-M5070/M6070 Advanced Series monochrome document systems provide high-performance functionality adaptable to your business needs.

## innovative features

### Duplexing Single Pass Feeder (DSPF)

Standard 150-sheet dual head document feeder scans both sides of a document in a single pass.

### Advanced Network Scanning

Sharp's ImageSEND™ feature provides one-touch distribution to email, network folders, cloud applications and more.

### Compact PDF

Standard compact PDF feature dramatically reduces the file size of most color scanned documents.

### Easy-to-Use Smart

**Touchscreen**  
Tablet-style menu provides quick access to features and functions.

### Built-in Retractable Keyboard

Full-size QWERTY keyboard enables easy data entry.

### High Quality Printing

1200 x 1200 dpi resolution produces razor-sharp documents. True Adobe® PostScript® 3™ drivers offer extensive job control.

### In-line Stapling

Produce professional-looking corner-staple or edge-staple documents up to 65 pages.

### On-board Document Storage

Sharp's easy-to-use Document Filing System enables users to store frequently used files.

### Manual Stapler

Manual stapling feature makes it easy to re-staple originals after scanning.

### Walk-up Motion Sensor

Detects walk-up users and wakes the machine from sleep mode, making it ready for use within 18 seconds.

### Saddle Stitch Finishers

Make high quality booklets up to 80 pages.

### Enhanced Security Features

256-bit data encryption with up to 10-times data overwrite, as well as Sharp's convenient End-of-Lease feature.

### Advanced Finishing

Sharp gives you a choice of five high-performance finishers to give your documents a professional look. Choose from a compact inner finisher to a high capacity, floor-standing saddle stitch finisher.

### Flexible Paper Handling

Paper drawers feed up to 12" x 18" and support media up to 300 gsm. 550-sheet capacity makes it easy to reload a full ream of paper. A high capacity split tandem drawer is also available.

### Large Capacity Cassette

Large capacity cassette option adds an additional 3,000 sheets of paper for a total on-line capacity of up to 6,300 sheets.





## ENHANCED COLLABORATION FOR STREAMLINED WORKFLOWS



Scan and convert documents to popular file formats seamlessly with Sharp's built-in OCR function.



Distribute, access and print documents more easily.



With Serverless Print Release you can securely print a job and release it from up to six Advanced Series models (including host).

### Powerful document workflow solutions help you work more efficiently.

#### **Simplify Managing Different File Types with Intelligent Image Processing**

Easily scan and **convert documents** to popular file formats including **Microsoft Word, PowerPoint** and **Excel**, as well as a variety of **PDF formats** such as Searchable PDF, Encrypted PDF, Compact PDF and others. You can also direct print these same file types from thumb drives, cloud applications and mobile devices. This function is enabled via **DirectOffice™** technology. With this much flexibility, you can speed through your workflow tasks faster than ever!

#### **Distribute, Access and Print Your Documents with Ease**

Sharp makes it easy to send documents to the destinations you need, and goes beyond traditional network scanning with standard **Email Connect** and **Cloud Connect** features. With Email Connect, scan to email is seamlessly integrated with Microsoft Exchange and Gmail™. With Cloud Connect, you can easily scan to and print from **Microsoft OneDrive for Business, SharePoint Online** and **Google Drive** without additional middleware.

#### **Scan and Print Files Easily from Mobile Devices**

The Advanced Series monochrome document systems also make it easy to scan and print files from tablets and smart phones using **Sharpdesk Mobile**, a free downloadable app available for most common mobile devices.<sup>1</sup> The monochrome Advanced Series also supports popular mobile technologies such as **AirPrint®**, **Android™ print framework** and **Google Cloud Print™**.<sup>2</sup> You can print locally from your device or download files from supported cloud applications. Since the monochrome Advanced Series can connect to mobile devices through a **point-to-point wireless connection**, there is no interference with your corporate network.

#### **Flexible Printing Solutions Help Speed Up Your Office Productivity**

The monochrome Advanced Series come standard with **true Adobe PostScript 3** and **PCL 6** printing systems to help you speed through all of your output needs with accuracy. To help streamline your jobs, these powerful performers include **Serverless Print Release**, enabling you to securely print a job and release it from up to six Advanced Series models (including host) on your network. And with Google Cloud Print web printing service, you can print from Chromebook™ notebook computers, PCs and more from virtually anywhere.

#### **Simplify Complex Business Workflows**

**Sharp OSA technology** can help your business leverage the power of your network applications, back-end systems and cloud services.<sup>2</sup> Easily automate complex processes and help eliminate redundant tasks. Create your own custom integrations or take advantage of the growing portfolio of Sharp OSA applications available from Sharp Partner Program members.



<sup>1</sup> Go to [www.sharppusa.com](http://www.sharppusa.com) for a list of supported devices and operating systems.

<sup>2</sup> Some features require optional equipment and/or software/services.

# TAKING CARE OF BUSINESS SAFELY AND SECURELY

## Manage your device, help safeguard your data, help protect your business.

Businesses require that the devices on their networks are properly managed and closely monitored to ensure their data remains uncompromised. To help achieve this, the MX-M5070/M6070 Advanced Series offer powerful device management utilities, web-based customer training and advanced, **multi-layered security features**.

With the **Sharp Remote Device Manager (SRDM)**, administrators can take control of system features and simplify installation and management. SRDM makes it easy to view service logs, click counts, history reports and more. Its event-driven service alerts help you monitor the device and maximize uptime. The **Remote Front Panel** feature allows administrators to view and control the machine's LCD panel from a PC to troubleshoot issues and train operators remotely. Sharp also offers both **built-in** and additional **auditing hardware and software to control, access and track usage** of each device on the network.\* And with **My Sharp™**, you get a dedicated training website customized to your model and configuration to help you understand and utilize all of the advanced features of your Sharp product, including those for security.

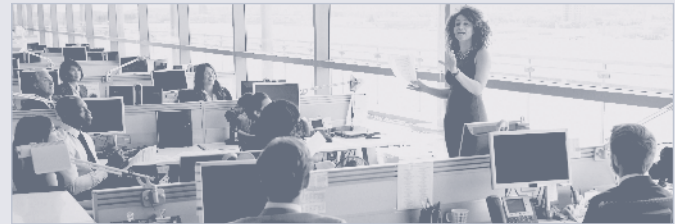


To help protect employees' privacy and intellectual property, the monochrome Advanced Series is armed with a variety of security measures, including features such as **data encryption**, **data overwrite protection** and **data erase**. Multiple **security protocols** help restrict access to the device while in operation, and a convenient **End-of-Lease** feature overwrites all data at time of trade-in. **Authority Groups** help manage and restrict specific copying, printing, scanning and fax features to safeguard data and control costs. The **Admin Audit Log** feature allows IT administrators to track activity on the device. **Confidential Printing** and **Secure Fax Release** help ensure that sensitive documents are kept safe by requiring users to enter a PIN code in order to print them. For advanced security, these models support Active Directory user authentication and secure single sign-on to network folders and emails. For an optimized workflow experience, ID card authentication is also available.\*



These scalable security offerings aim to help **protect your intellectual property**, preserve confidential information and help your business meet regulatory requirements including the Health Insurance Portability and Accountability Act (HIPAA) and the Family Educational Rights and Privacy Act (FERPA). For additional information visit: [www.sharppusa.com/security](http://www.sharppusa.com/security).

*\*Some features require optional equipment and/or software.*



## ENVIRONMENTAL COMMITMENT



### **An Environmentally Responsible Approach to Product Design**

Sharp is committed to environmental sustainability and corporate responsibility including planning, design, manufacturing, distribution and product end-of-life management. The monochrome Advanced Series adhere to Sharp's Green Products Guidelines in pursuit of these commitments. These guidelines include designing products that consume less power, using recycled materials, reducing the amount of material used in products and packaging, and labeling the type of materials used. Sharp also aims to design products that are upgradable, easy to repair and easy to take apart for recycling.

The MX-M5070/M6070 document systems are ENERGY STAR® qualified and RoHS compliant to restrict the use of hazardous substances. These products also have low TEC values. Sharp MFPs are EPEAT® registered.



### **Toner Recycling Program**

As part of our commitment to helping preserve the environment, Sharp offers our customers zero-waste-to-landfill recycling for Sharp consumables, including cartridges, bottles, toner collection containers and drum units. Sharp encourages customers to recycle their used Sharp toner cartridges in bulk by providing a pre-paid recycling kit for their return to our facility.

### **Environmental Leadership**

As a testament to our commitment to the environment, Sharp is a multi-year winner of the ENERGY STAR annual Excellence in Energy Proficiency Product Design. Sharp is also a multi-year winner of the SmartWay® Excellence Award which recognizes companies for conserving energy and lowering greenhouse gas emissions in logistics and transportation.

For more information about Sharp's environmental leadership including information about energy efficient products, electronics or toner cartridge recycling, please visit [www.sharppusa.com/environment](http://www.sharppusa.com/environment).

# MX-M5070/M6070 SPECIFICATIONS

## Main Specifications

<b>MX-M5070/M6070</b>	Base models include multitasking controller, 150-sheet DSPF, PCL® 6 and Adobe® PostScript® 3™ printing systems, network scanning, auto duplexing, 1 x 550-sheet paper drawer, 100-sheet bypass tray.	
<b>Type</b>	Multi-function digital document system	
<b>Display</b>	10.1" (diagonally measured) color dot matrix high-resolution touch panel tilting display. 1024 x 600 dots (W-SVGA)	
<b>Functions</b>	Copy, print, network print, network scan, document filing and fax <sup>1</sup>	
<b>Copy System</b>	Dry electrostatic transfer/Dual component developer/Magnetic brush development/OPC drums/Belt fusing/white LED exposure	
<b>Originals</b>	Sheets and bound documents	
<b>Max. Original Size</b>	11" x 17"	
<b>Output Size</b>	Min. 5½" x 8½", Max. 12" x 18"	
<b>Copy Speed</b>	50/60 ppm (8½" x 11")	
<b>Multiple Copy</b>	Max. 9,999 copies	
<b>First Copy Time (in seconds)<sup>2</sup></b>	<b>MX-M5070</b>	<b>MX-M6070</b>
	Platen Glass	3.7
	DSPF	6.6
<b>Warm Up Time</b>	MX-M5070: 29 seconds (from main power switch on), 16 seconds (from [Power] button on) MX-M6070: 31 seconds (from main power switch on), 18 seconds (from [Power] button on)	
<b>Magnification</b>	25% to 400% in 1% increments (with DSPF 25%-200%)	
<b>Original Feed</b>	150-sheet DSPF with original size detection.	
<b>Scan Speed</b>	Copy: Up to 200 ipm (B&W)/106 ipm (Color) Scan: Up to 200 ipm (B&W/Color)	
<b>Original Sizes</b>	5½" x 8½", 8½" x 11", 8½" x 11" R, 8½" x 14", 11" x 17"	
<b>Paper Capacity</b>	Standard: 650 Sheets/Maximum: 6,300 Sheets	
<b>Paper Feed System</b>	Standard: (1) 550-sheet paper drawer (letter/legal/ledger/statement size) and 100-sheet bypass tray (letter/legal/ledger/statement/envelope size). Optional: Single, double, or triple drawer paper deck (550, 1,100, or 1,650 sheets), split tandem paper drawer (2,100 sheets letter only) plus (1) 550-sheet paper drawer (letter/legal/ledger/statement size).	
<b>Paper Weights and Types</b>	Paper drawers: 16 lb. bond to 110 lb. cover. Split tandem drawers: 16 lb. bond to 28 lb. bond. Other paper types include plain, pre-printed, recycled, pre-punched, letterhead and color paper. Bypass tray: 16-28 lb. bond (plain paper), 13-16 lb. bond (thin paper), 28 lb. bond-110 lb. cover (heavy paper), 20-24 lb. bond (Monarch/Com-10 envelope), tab paper (letter). Also label paper, gloss paper, pre-printed, recycled, pre-punched, letterhead, color paper and OHP film.	
<b>Duplexing</b>	Standard automatic duplex copying and printing	
<b>CPU</b>	Up to 1.4 GHz multi-processor design	
<b>Interface</b>	10/100/1000 Base-T Ethernet, USB 2.0: 2 host ports (front and rear), 1 available device port (rear), wireless 802.11 b/g/n	
<b>Memory</b>	Standard 5 GB copy/print (shared)/Hard Disk Drive: 500 GB	
<b>Hard Disk Drive</b>	500 GB	
<b>Copy Resolution</b>	Scan: Up to 600 x 600 dpi Output: Up to 1200 x 1200 dpi	
<b>Copy Modes</b>	Monochrome/Grayscale	
<b>Exposure Control</b>	Modes: Automatic, Text, Text/Photo, Text/Printed-Photo, Printed-Photo, Photo, Map, Pale-Color Document Settings: Auto or 9 step manual	
<b>Halftone</b>	256 gradations/2 levels (monochrome)	
<b>Copy Features</b>	Scan-Once Print-Many, electronic sorting, offset-stacking, Auto Paper Selection (APS), Auto Magnification Selection (AMS), Auto Tray Switching (ATS), black-white reversal, blank page skip, book copy, book divide, card shot, center erase, centering, cover pages, dual page copy, edge erase, image edit, image preview, insert pages, job build, job programs, margin shift, mirror image, mixed size original, multi-page enlargement, original count, pamphlet style, proof copy, repeat layout, reserve copy, rotated copy, stamp, stamp custom image, suppress background, tab copy, tab-paper insertion, tandem copy, toner save mode, transparency inserts, watermark, 2-in-1 / 4-in-1 / 8-in-1 multi shot	
<b>Account Control</b>	Up to 1,000 users. Supports user authentication via local, LDAP, and Active Directory® for copy, print, scan and document management.	

## Main Specifications (continued)

<b>Output Tray</b>	Center Exit Tray (Main): 250 sheets (face down)
<b>Capacity</b>	Job Separator (Upper Tray): 100 sheets (face down) Right Side Exit Tray: 100 sheets (face down)
<b>Cloud Supported Services</b>	Box, Google® Cloud Print, Google Drive, OneDrive® for Business, SharePoint® Online
<b>Network Protocols</b>	TCP/IP (IPv4, IPv6, IPsec), HTTP/HTTPS, IPP/IPP-SSL, FTP/FTPS, SNNMP3, SMTP/SMTP-SSL, POP3/POP3-SSL, LDAP/LDAP-SSL, 802.1x for Windows and Unix.
<b>Network and Data Security</b>	Includes IP/MAC address filtering, protocol filtering, port control, TLS Encryption, Kerberos support, Active Directory integration, data encryption, End-of-Lease, data overwrite (up to 10x), DoD 5220.22-M
<b>Firmware Management</b>	Flash ROM with local (USB), network update capability and firmware update 1 to N with SRDM (Sharp Remote Device Manager)
<b>Device Setup</b>	Web-based management/cloning with user/administrator level login
<b>Service/Functions</b>	Remote Front Panel, remote access to service logs and click counts
<b>Accessibility Features</b>	Free stop tilting front panel, adjustment of key touch sound and speed, concave key, document feeder free stop, job programs, remote front panel, universal grip for paper trays and disable screen timeout
<b>Environmental Standards</b>	International Energy Star Program Ver. 2.0, European RoHS, Blue Angel (RAL-UZ171)
<b>Power Source</b>	110-127 V AC, 60 HZ, 15 A Receptacle
<b>Power</b>	1.44 kW or less
<b>Consumption</b>	
<b>Weight</b>	Approx. 159 lbs.
<b>Dimensions</b>	Approx. 24" (w) x 26" (d) 33" (h)
<b>Network Printing System</b>	
<b>PDL</b>	Standard PCL® 6 compatible, Adobe PostScript 3
<b>Resolution</b>	1200 x 1200 dpi
<b>Print Speed</b>	50/60 ppm (8½" x 11")
<b>Print Drivers</b>	Windows 7, Windows 8.1, Windows 10, Windows Server® 2008, Windows Server 2008 R2, Windows Server 2012, Windows Server 2012 R2, Windows Server 2016, Windows PPD, MAC OS X® (including 10.6 to 10.12), all MAC PPD, Linux® PPD
<b>Mobile Printing</b>	AirPrint®, Android™ printing framework (Sharp Print Service Plugin), Sharpdesk® Mobile <sup>3</sup>
<b>Print Features</b>	Auto configuration, serverless print release, bar code font printing, carbon copy print, chapter inserts, confidential print, continuous printing, custom image registration, different cover page/last page/other page, document control, document filing, duplex printing, electronic sorting, folding, form overlay, hidden pattern print, image rotation, image stamp, image type, job bypass print, job retention, layout print, margin shift, multiple pamphlet, network tandem print, N-up printing, offset stacking, page interleave, pamphlet style, poster print, proof print, print and send, punching, stapling, tab paper print, tab printing, toner save mode, transparency inserts, tray status, user authentication, watermarks, zoom print
<b>Direct Printing</b>	File Types: TIFF, JPEG, PCL, PRN, TXT, PDF, Compact PDF, Encrypted PDF, PostScript, DOCX, XLSX, PPTX, and PNG. Methods: FTP, SMB, Web page, Email and USB memory
<b>Resident Fonts</b>	80 outline fonts (PCL), 139 fonts (PS)
<b>Interface</b>	RJ-45 Ethernet 10/100/1000 Base-T, USB 2.0, Wireless
<b>Operating Systems and Environments</b>	Windows® 7, Windows 8.1, Windows 10, Windows Server® 2008, Windows Server 2008 R2, Windows Server 2012, Windows Server 2012 R2, Windows Server 2016, Mac OS X 10.6-10.12, UNIX®, Linux, Citrix® (XenApp 5.0-7.6), Windows Remote Desktop Services, SAP device types <sup>1</sup>
<b>Printing Protocols</b>	LPR, IPP, IPPS, Raw TCP (port 9100), FTP, POP3, HTTP, LPD and LPR for Unix
<b>Network Scanning System</b>	
<b>Scan Modes</b>	Standard: Color, monochrome, grayscale
<b>Max. Original Size</b>	11" x 17"
<b>Optical Resolution</b>	600 dpi
<b>Output Modes</b>	600 dpi, 400 dpi, 300 dpi, 200 dpi, 150 dpi, 100 dpi

## Network Scanning System (continued)

<b>Image</b>	Monochrome Scanning: Uncompressed, G3 (MH), G4 (MR/MMR)
<b>Compression</b>	Color/Grayscale: JPEG (high, middle, low) Internet Fax mode: MH/MMR (option) <sup>1</sup>
<b>Image Formats</b>	Monochrome: TIFF, PDF, PDF/A, Encrypted PDF, XPS, Searchable PDF, DOCX, XLSX, PPTX, TXT, and RTF. Color/Grayscale: TIFF, JPEG, PDF, PDF/A, Compact PDF, Encrypted PDF, XPS, Searchable PDF, DOCX, XLSX, PPTX, TXT and RTF. Internet Fax: TIFF-FX, TIFF-F, TIFF-S <sup>1</sup>
<b>Scan Destinations</b>	Email, Desktop, FTP, Folder (SMB), USB, Internet fax (option), Super G3 fax (option)
<b>One-touch Destinations</b>	Up to 2,000 (combined scan destinations)
<b>Group Destinations</b>	Up to 500
<b>Programs</b>	48 (combined)
<b>Max. Jobs</b>	Up to 100
<b>Enhanced Email Integration</b>	Standard Gmail connector, standard Exchange connector
<b>Scanning Protocols</b>	HTTP/HTTPS, FTP/FTPS, SMTP/SMTP-SSL/ESMTP, SMB, POP3, LDAP, S/MIME
<b>Software</b>	Sharpdesk® desktop personal document management software (1 user license included), Sharpdesk Mobile (download)

## Optional Equipment

<b>MX-60ABD</b>	Deluxe Copier Cabinet Base (with front door)
<b>MX-DE25N</b>	Stand/1 x 550-sheet Paper Drawer
<b>MX-DE26N</b>	Stand/2 x 550-sheet Paper Drawers
<b>MX-DE27N</b>	Stand/3 x 550-sheet Paper Drawers
<b>MX-DE28N</b>	Stand/1 x 550 + 2,100-sheet Split Tandem Paper Drawers
<b>MX-DE29</b>	Low Stand/1 x 550-sheet Paper Drawer
<b>MX-LC17N</b>	3,000-sheet Large Capacity Cassette (letter, requires MX-DE25N/26N/27N/28N)
<b>MX-LT10</b>	Long Paper Feeding Tray
<b>MX-FN27N</b>	50-sheet Staple Inner Finisher
<b>MX-FN28</b>	1K Stacking 50-sheet Staple Finisher
<b>MX-FN29</b>	1K Stacking 50-sheet Staple/Saddle Stitch Finisher
<b>MX-FN30</b>	3K Stacking 65-sheet Staple Finisher
<b>MX-FN31</b>	3K Stacking 65-sheet Staple/Saddle Stitch Finisher
<b>MX-RB25N</b>	Paper Pass Unit (required for MX-FN28/29/30/31)
<b>MX-PN14B</b>	3-Hole Punch Unit (requires MX-FN27N)
<b>MX-PN15B</b>	3-Hole Punch Unit (requires MX-FN28/29)
<b>MX-PN16B</b>	3-Hole Punch Unit (requires MX-FN30/31)
<b>MX-SCX1</b>	Staple Cartridge for MX-FN27N/28/29
<b>AR-SC2</b>	Saddle-stitch Staple Cartridge for MX-FN29
<b>MX-SC11</b>	Staple Cartridge for MX-FN30/31
<b>MX-SC12</b>	Saddle-stitch Staple Cartridge for MX-FN31
<b>MX-TR19N</b>	Right Side Exit Tray
<b>MX-TR20</b>	Job Separator Tray
<b>MX-TU16</b>	Center Exit Tray
<b>MX-UT10</b>	Utility Table
<b>MX-FX15</b>	Fax Expansion Kit
<b>MX-FWX1L</b>	Internet Fax Kit
<b>MX-PF10</b>	Bar Code Font Kit
<b>AR-SU1</b>	Stamp Unit (requires AR-SV1 Stamp Cartridge)
<b>AR-SV1</b>	Stamp Cartridge
<b>MX-AMX1L</b>	Application Integration Module
<b>MX-FR57U</b>	Commercial Data Security Kit (not available at time of launch)
<b>DVENDFS</b>	Generic Vendor Interface Kit

## Supplies

<b>MX-561NT</b>	Toner Cartridge
<b>MX-561NV</b>	Developer
<b>MX-560DR</b>	Drum
<b>MX-609HB</b>	Toner Collection Container

<sup>1</sup> Some features require optional equipment. See your local dealer.

<sup>2</sup> May vary depending on product configuration, machine settings and operating and/or environmental conditions.

<sup>3</sup> Go to [www.sharpsusa.com](http://www.sharpsusa.com) for a list of supported devices and operating systems.



SHARP ELECTRONICS CORPORATION  
100 Paragon Drive, Montvale, NJ 07645  
1-800-BE-SHARP • [www.sharpsusa.com](http://www.sharpsusa.com)

Design and specifications subject to change without notice. Sharp, Sharp OSA, Sharpdesk, My Sharp and all related trademarks are trademarks or registered trademarks of Sharp Corporation and/or its affiliated companies. Windows, Windows Server, Excel, PowerPoint, OneDrive and SharePoint are registered trademarks of Microsoft Corporation. Android, Google Drive, Google Cloud Print and Chromebook are registered trademarks of Google LLC. AirPrint is a registered trademark of Apple Inc. Adobe and PostScript are registered trademarks of Adobe Systems Inc. DirectOffice is a trademark of CSR Imaging US, LP, registered in the United States and other countries, used with permission. BLI Reliability award based on devices tested from January 2012 through May 2018. All other trademarks are the property of their respective owners.